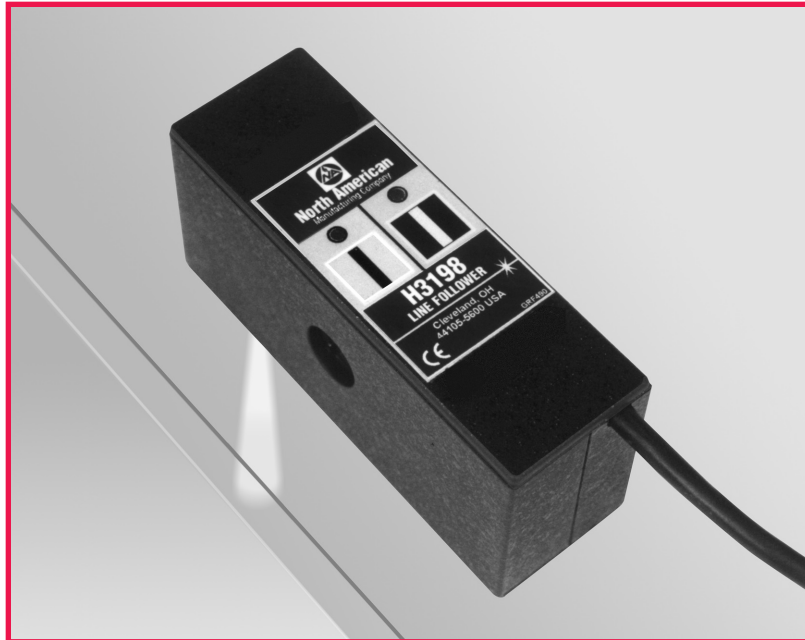


H3198 Discriminating Reflective Line Follower Detector



- **Advanced discriminating white light illumination**
- **Material edge/contrast edge guiding capability**
- **Unique optical design allows precise alignment without the use of external tools**
- **Long life LED light source**
- **Simple one-touch setup with SimPlex™ system**
- **Precisely defined field of view**
- **Hermetically sealed, matched photo-diodes for long-term stability**

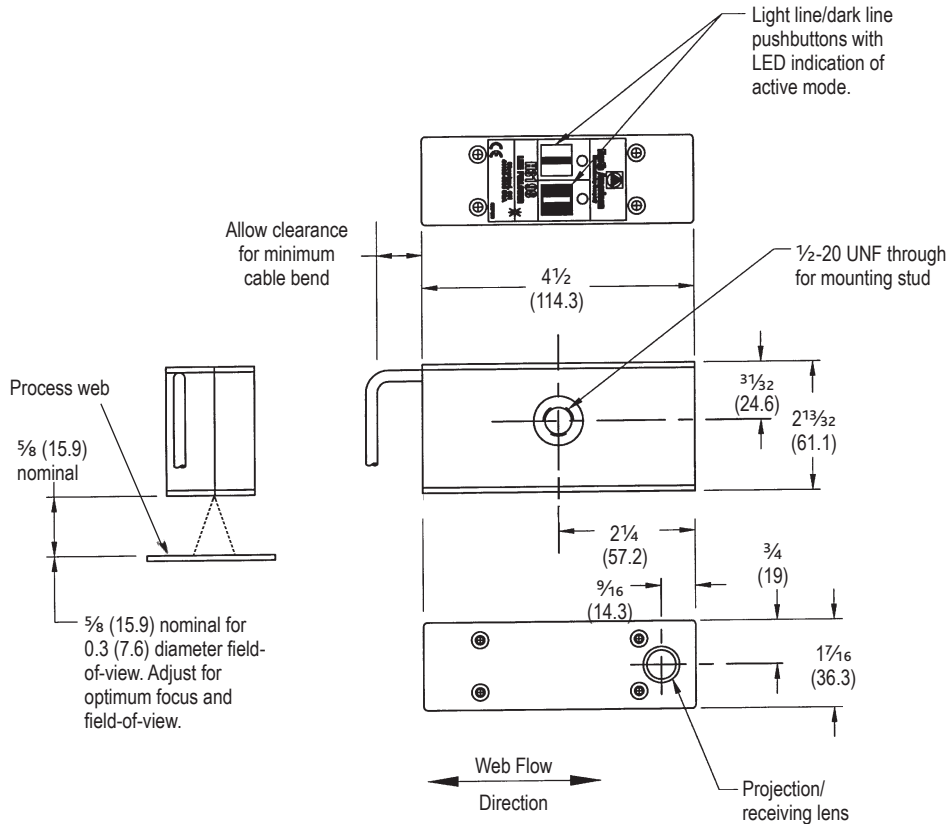
Utilizing advanced technology in LED's, this detector provides a new and heightened level of robustness and ease of use to line follower applications. A reflective type of detector, Model H3198 allows guiding to printed lines or to the edge of color contrast on printed webs, or to the edge of the web itself.

At the heart of the detector is the full-spectrum white LED illumination source which offers multiple advantages. The distinct circular beam projection eases operator setup and the full spectrum "white" light allows distinguishing normally difficult color contrasts. Through a proprietary discriminating circuit, virtually eliminated are the effects of ambient light. Further, the inherent characteristic of long life of the LED's assures reliable operation for years to come.

On the detector body, at the convenience of the operator, is the selection of guide to light line/dark line modes made via pushbuttons. LED indicators identify the current operating mode.

DIMENSIONS

inches (mm)



DIMENSIONS SHOWN ARE SUBJECT TO CHANGE. PLEASE OBTAIN CERTIFIED PRINTS FROM FIVES NORTH AMERICAN COMBUSTION, INC. IF SPACE LIMITATIONS OR OTHER CONSIDERATIONS MAKE EXACT DIMENSION(S) CRITICAL.

SPECIFICATIONS

Model Numbers:

- H3198-6415/3-15 15 ft (4.6 m) cable with SimPlex™ compatible connectors (cable length includes 18" (0.45 m) "Y" and 2 connectors)
- H3198-6400/3-15 15 ft (4.6 m) cable with connectors for H6400 controller (cable length includes 18" (0.45 m) "Y" and 2 connectors)
- H3198-SPLG/3-15 15 ft (4.6 m) cable with spade lug ends

Power requirements: 100 mA at 15 V dc (supplied by controller)

Field of view: 0.3" (7.6) at 5/8" (15.9) standoff distance

Ambient temperature: 32-122 F (0-50 C)

Detector to web distance: 5/8" (15.9) nominal for 0.3" (7.6) field of view (adjust as necessary to optimize field of view and focus)

Line width range: 0.015" (0.4) to 0.25" (6.4) (depending on contrast)

Minimum uniform background area on each side of line: 0.375" (9.5) preferred, [0.25" (6.4) - $\frac{\text{Line Width}}{2}$] minimum

Light source: white LED (400-750 nm)

Fives North American Combustion, Inc. Guiding Systems

4455 East 71st Street - Cleveland, OH 44105 USA - Tel: 216.271.6000 - Fax: 216.641.7852
email: fna.guiding@fivesgroup.com - www.fivesgroup.com/fivesna