



- **Setpoint controller with integral manual/auto station**
- **Relay contact outputs to provide a variety of output control interfacing. Each relay is rated at 125 VA, 120/240 V ac.**
- **Prevents equipment damage caused by fluing from cracks and doors**
- **Saves fuel by eliminating cold air infiltration**
- **An optional 24 V dc power supply is available**
NOTE: When replacing an EPIC II controller, an external 24 V dc power supply is required.
- **Direct furnace pressure indication**

The 8351 Furnace Pressure Controller, in conjunction with the 8244 Transmitter, provides stable furnace pressure and manual/automatic station functions.

8351-C relay outputs are used to drive interposing relays, electro-hydraulic valves, solenoid valves, or bi-directional motors. A second 4-20 mA PID output is also available to position a control motor or linear actuator.

Furnace pressure control is generally used to maintain a slightly positive pressure, providing:

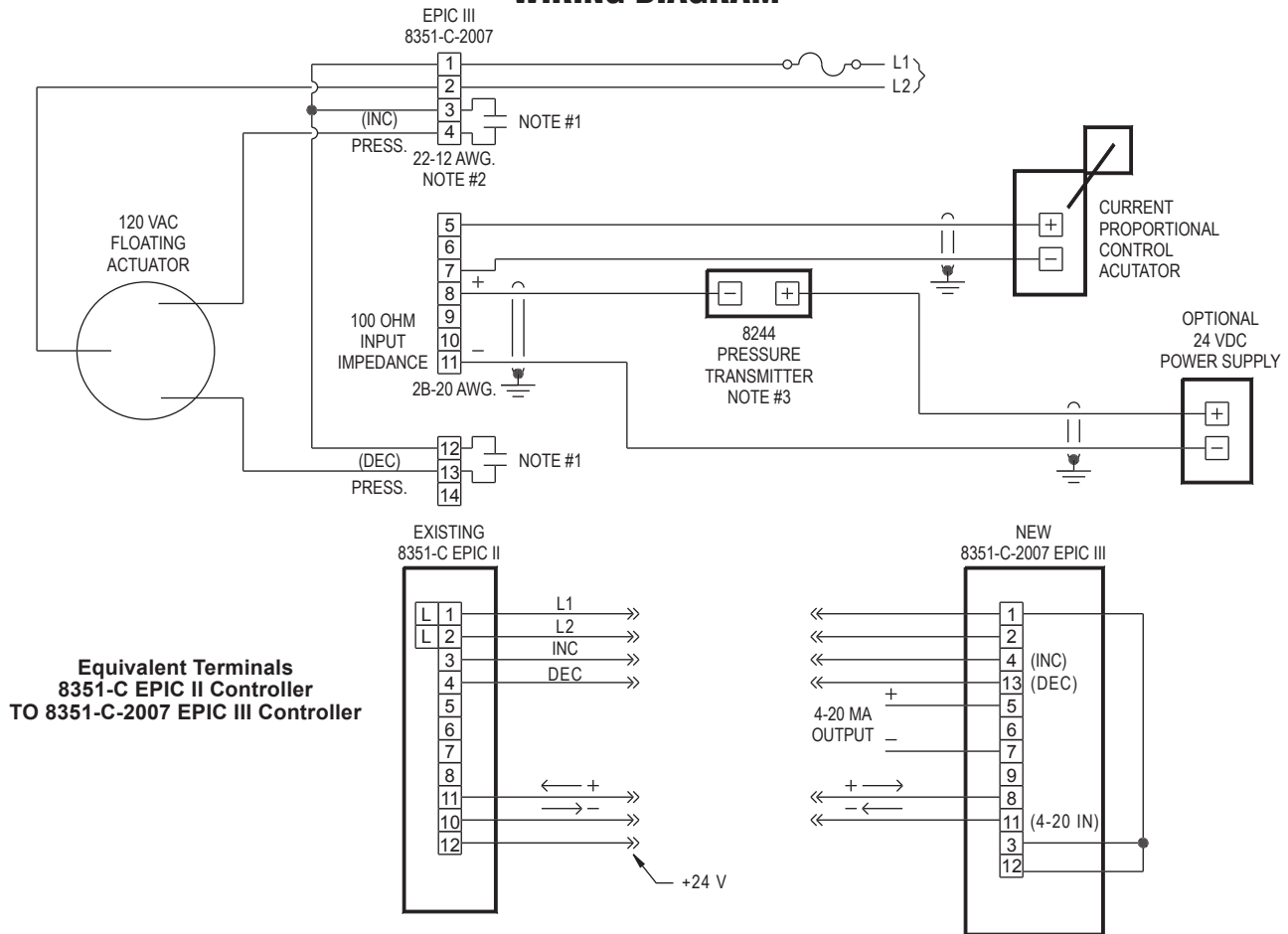
- improved product quality
- maintenance savings by preventing excessive fluing through cracks and doors and also reduces "stingers"
- elimination of cold air infiltration, preventing load cold spots
- prevention of furnace atmosphere contamination

The 8351-C-C-2007 input is fully configurable to match any input scaling requirements.

SPECIFICATIONS

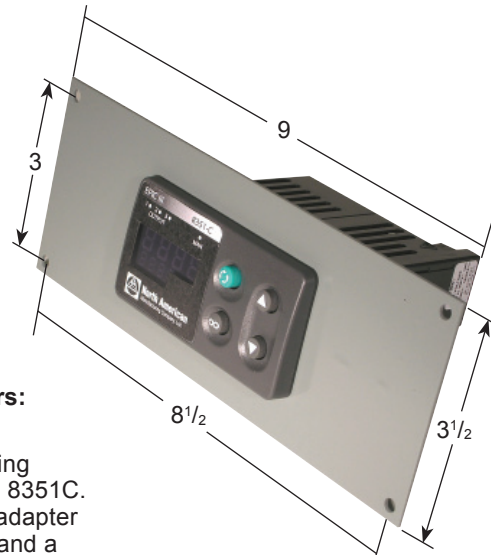
- | | |
|---|---|
| Operating Temperature Range: 0 to 149 F (-18 to 65 C). | Size: 1/8" DIN horizontal, 2.08" H × 3.93" W × 3.85" D. |
| Power Requirements: 120 V ac 50-60 Hz (102-132 V ac) at 15 VA exclusive of connected load. | Panel Cutout: 1 ²⁵ / ₃₂ " × 3 ⁵ / ₈ ". |
| Output Load Limits: 1.2 amps maximum at 120 V ac; 50 mA minimum. | Weight: .32 lb. |
| | Case Material: Black anodized extruded aluminum. |

WIRING DIAGRAM



DIMENSIONS

inches



To Order, choose from one of the following part numbers:

- R860-8351** This specifies the controller only.
- 8351-C-CINV** This specifies the controller and mounting adapter plate for replacing the old style 8351C.
- 8351-C-CONV-PS** This specifies the controller, mounting adapter plate for replacing the old style 8351C and a 24 V dc power supply.

DIMENSIONS SHOWN ARE SUBJECT TO CHANGE. PLEASE OBTAIN CERTIFIED PRINTS FROM FIVES NORTH AMERICAN COMBUSTION, INC. IF SPACE LIMITATIONS OR OTHER CONSIDERATIONS MAKE EXACT DIMENSION(S) CRITICAL.

WARNING: Situations dangerous to personnel and property may exist with the operation and maintenance of any combustion equipment. The presence of fuels, oxidants, hot and cold combustion products, hot surfaces, electrical power in control and ignition circuits, etc., are inherent with any combustion application. Parts of this product may exceed 160F in operation and present a contact hazard. Fives North American urges compliance with National Safety Standards and insurance Underwriters recommendations, and care in operation.

Fives North American Combustion, Inc., 4455 East 71st Street, Cleveland, OH 44105 USA, Phone 216.271.6000
Fax 216.641.7852 email: fna.sales@fivesgroup.com • www.fivesgroup.com/fivesna