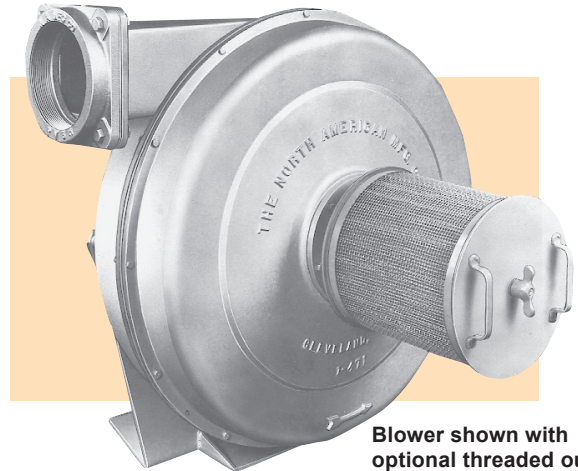


FEATURES

- Widest range of sizes available in the turbo blower market to meet the needs of the combustion, drying, and process industries.
- Energy efficient 60 hertz motors on all blowers 5 hp and above that meet or exceed the 1992 Energy Act which became effective in 1997.
- High volume blowers are available in 1800 rpm or 3600 rpm with single or multiple stage designs to meet the needs of the most demanding situations.
- Horsepower and impeller selection designed to achieve flat performance curves to minimize variations over the operating range of the blower.
- Full array of accessories include filters, silencers, filter silencers, inlet and outlet adapters, flexible sleeves, inlet vane dampers, AC frequency drives, combination motor starters and fusible disconnects. These options offer the protection needed to keep operational costs down while increasing blower life expectancy.



Blower shown with optional threaded outlet and 2923 Filter

SELECTION

Pressures and capabilities are shown on the succeeding pages of this bulletin. While motors with 1.15 service factors are more and more available, it is wise to allow some capacity safety margin when choosing a blower for a calculated cfm requirements--unanticipated piping leaks, variations in burner capacity, and other unforeseen factors could cause motor overload unless there is some cushion. Without prior knowledge of leakage and other conditions, a 10% safety margin is considered minimum.

It is also important to allow for pressure losses in piping, fittings, and valves, which reduce pressure available at the burner (or other end use).

Altitude and preheated air affect blower ratings--pressure, capacity, and horsepower. For blower selection/performance at altitudes significantly above sea level, the blower section of the **North American Combustion Handbook** is recommended. Generally, standard motors can be used up to

3300 feet elevation; special construction is recommended above 3300 feet.

See Bulletin 2600 if Blower will handle air hotter than 250°F.

CONSTRUCTION

All metal construction including mild steel, cast aluminum, or corrosion resistant stainless steel create a nearly indestructible blower allowing for years of trouble free service.

Specially fabricated aluminum or steel impeller designs reduce vibration, lengthen motor life, and lower energy consumption due to lightweight construction technology.

Individual impeller dynamics assured by either single or two plane balancing to minimize vibration and assure longer bearing life.

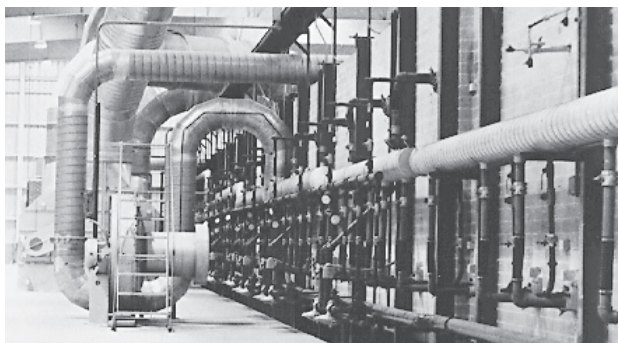
Strategically positioned bolt hole locations allow for in-field repositioning of air flow discharge.

Standard shaft motors on most single stage blowers reduce replacement downtime in the field.

Inlet or outlet adapters are not included as standard supply and must be specified at an additional cost.

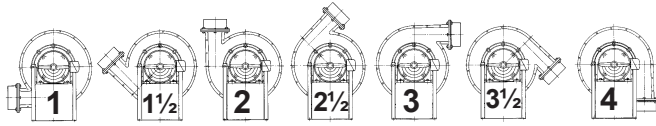
A threaded (female) flange is available with blowers of 6" and smaller discharge pipe size. An SW connection is available for 8" and larger, or may be specified for smaller sizes.

An SW inlet (unthreaded) for sleeve or welding connection is available. A threaded female inlet may be specified for 3" through 6" inlets. For an open inlet, an inlet guard should be specified. Blowers should not be operated without inlet protection.



Typical 2300 Blower Installation

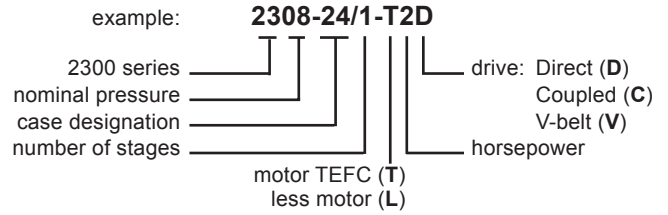
Discharge position numbers as viewed from motor side of blower



*	A	x	x	x	x	x	x	x
	B	x	x	x	x	x	x	x
	C	x		x		x		x
	D	x	x	x	x	x	x	
	E	x		x		x		

The letter assigned to each blower below identifies the standard discharge positions available. Contact the Product Manager for other discharge positions (at extra cost and longer delivery).

BLOWER DESIGNATION EXPLANATION



Nominal pressure osi/wc	Blower designation	Discharge Position Group	cfm at 100% of motor rating	3600 rpm TEFC 1.15 SF motor	Inlet nominal pipe size	Outlet nominal pipe size	Intake Filter designation	Intake Silencer 2936-	Intake Filter Silencer designation	Approx. weight, lb		
										60 Hertz Direct drive (D)	50 & 60 Hertz V-Belt drive (V)	60 Hertz Coupled drive (C)
4 osi 6.92"wc	2304-11/1-T.3	C	110	T.33-C36T1SC	3	2	2923-8-11A	None	2942-8-11A	40	100	100
	8 osi 13.84"wc	2308-11/3-T.5	C	55	T.50-C36T1L4.0C	3	2	2923-8-11A	None	2942-8-11A	50	110
2308-14/1-T.		C	60	T.50-C36T1SC	3	3	2923-8-14A	"	2942-8-14A	80	230	210
2308-14/1-T.75		C	170	T.75-C36T1SC	3	3	2923-8-14A	"	2942-8-14A	80	230	210
2308-17/1-T1		C	220	T1.0-C36T1SC	3	4	2923-8-17A	"	2942-8-17A	90	320	260
2308-14/1-T1		C	250	T1.0-C36T1SC	3	3	2923-8-14A	"	2942-8-14A	80	230	210
2308-17/1-T1.5		C	390	T1.5-C36T1SC	4	6	2923-10-17A	None	2942-10-17A	120	320	260
2308-24/1-T2		E	460	T2.0-C36T1SC	6	6	2923-10-24A	8-24	2942-10-24A	150	470	400
2308-24/1-T3		E	770	T3.0-C36T1SC	6	8	2923-12-24A	8-24	2942-12-24A	170	490	420
2308-31/1-T5		E	1200	T5.0-D36T1SC	8	10	2923-18-31A	9-31	2942-18-31A	240	700	500
2308-31/1-T7.5		E	1900	T7.5-D36T1SC	8	10	2923-18-31A	9-31	2942-18-31A	280	750	550
10 osi 17.3"wc	2308-21/1-T10	B	2600	T10-D36T1SC	10	12	2923-22-21A	10-21	2942-22-21A	570	950	700
	2310-11/4-T.5	C	80	T.50-C36T1L5.2C	3	2	2923-8-11A	None	2942-8-11A	60	120	210
	2310-19/1-T.75	C	70	T.75-C36T1SC	3	3	2923-8-19A	"	2942-8-19A	90	300	300
	2310-19/1-T1	C	150	T1.0-C36T1SC	3	4	2923-8-19A	"	2942-8-19A	90	300	300
	2310-19/1-T1.5	C	290	T1.5-C36T1SC	4	6	2923-8-19B	"	2942-8-19B	130	340	340
	2310-19/1-T2	C	400	T2.0-C36T1SC	4	6	2923-10-19A	None	2942-10-19A	140	350	350
	2310-26/1-T3	C	580	T3.0-C36T1SC	6	6	2923-10-26A	8-26	2942-10-26A	190	500	500
	2310-26/1-T5	C	1000	T5.0-D36T1SC	6	8	2923-12-26A	8-26	2942-12-26A	210	520	520
	2310-35/1-T7.5	C	1500	T7.5-D36T1SC	8	10	2923-18-35A	9-35	2942-18-35A	430	800	600
	2310-21/1-T10	B	1900	T10-D36T1SC	10	12	2923-22-21A	10-21	2942-22-21A	580	950	700
12 osi 20.76"wc	2310-39/1-T50	A	12850	T50-D36S1SC	22	24	2921-1802-8/39	18-39	2941-1802-8/39	1250	-	-
	2310-39/1-T60	A	15000	T60-D36S1SC	24	24	2921-2403-12/39	24-39	2941-2403-12/39	1510	-	-
	2310-39/1-T75	A	18300	T75-D36S1SCB	24	24	2921-2403-12/39	24-39	2941-2403-12/39	1620	-	-
	2310-39/1-T100	A	23320	T100-D36S1SD	26	26	2921-2403-12/39	24-39	2941-2403-12/39	1820	-	-
	2310-39/1-T125	A	27790	T125-D36S1DB	26	30	Consult Cleveland			2400	-	-
	2312-11/4-T.5	C	50	T.50-C36T1L5.2C	3	2	2923-8-11A	None	2942-8-11A	60	120	120
	2312-19/1-T1	C	100	T1.0-C36T1SC	3	3	2923-8-19A	"	2942-8-19A	90	300	300
	2312-19/1-T1.5	C	220	T1.5-C36T1SC	4	4	2923-8-19B	"	2942-8-19B	130	340	340
	2312-19/1-T2	C	340	T2.0-C36T1SC	4	6	2923-8-19B	"	2942-8-19B	140	350	350
	2312-26/1-T3	C	450	T3.0-C36T1SC	6	6	2923-10-26A	8-26	2942-10-26A	190	500	500
16 osi 27.68"wc	2312-26/1-T5	C	850	T5.0-D36T1SC	6	8	2923-14-26A	8-26	2942-14-26A	210	520	520
	2312-35/1-T7.5	C	1400	T7.5-D36T1SC	8	8	2923-18-35A	9-35	2942-18-35A	430	800	600
	2312-35/1-T10	C	1700	T10-D36T1SC	8	10	2923-18-35A	9-35	2942-18-35A	450	820	620
	2312-21/1-T15	B	2600	T15-D36T1SC	14	12	2923-22-21B	14-21	2942-22-21B	600	1000	750
	2312-34/1-T20	A	4000	T20-D36T1SC	14	16	2923-30-34A	14-34	2942-30-34A	710	-	-
	2312-34/1-T25	A	4900	T25-D36S1SC	14	16	2923-30-34A	14-34	2942-30-34A	850	-	-
	2312-34/1-T30	A	5500	T30-D36S1SC	16	20	2923-30-34B	16-34	2942-30-34B	1030	-	-
	2312-34/1-T40	A	7300	T40-D36S1SC	16	20	2921-1602-8/34	16-34	2941-1602-8/34	1150	-	-
	2312-37/1-T50	A	10100	T50-D36S1SC	18	22	2921-1802-8/37	18-37	2941-1802-8/37	1200	-	-
	2312-37/1-T60	A	12050	T60-D36S1SC	18	24	2921-1802-8/37	18-37	2941-1802-8/37	1460	-	-
16 osi 27.68"wc	2312-37/1-T75	A	14880	T75-D36S1SCB	18	24	2921-1802-8/37	18-37	2941-1802-8/37	1700	-	-
	2316-14/2-T1	C	90	T1.0-C36T1L5.5C	3	3	2923-8-14A	None	2942-8-14A	100	250	230
	2316-14/2-T1.5	C	150	T1.5-C36T1L5.5C	3	3	2923-8-14A	"	2942-8-14A	140	290	270
	2316-17/2-T1.5	C	150	T1.5-C36T1L6.7C	4	4	2923-8-17B	"	2942-8-17B	110	345	285
	2316-19/1-T2	C	150	T2.0-C36T1SC	4	4	2923-8-19B	"	2942-8-19B	140	350	350
	2316-17/2-T2	C	220	T2.0-C36T1L6.7C	4	4	2923-8-17B	None	2942-8-17B	140	340	380
	2316-26/1-T3	C	290	T3.0-C36T1SC	6	6	2923-8-26A	8-26	2942-8-26A	300	605	490
	2316-17/2-T3	C	340	T3.0-C36T1L6.0C	4	6	2923-10-17A	None	2942-10-17A	160	360	400
	2316-19/1-T3	C	340	T3.0-C36T1SC	4	6	2923-10-19A	"	2942-10-19A	160	370	370

Nominal pressure osi/"wc	Blower designation	Discharge Position Group	cfm at 100% of motor rating	3600 rpm TEFC 1.15 SF motor	Inlet nominal pipe size	Outlet nominal pipe size	Intake Filter designation	Intake Silencer 2936-	Intake Filter Silencer designation	Approx. weight, lb		
										60 Hertz Direct drive (D)	50 & 60 Hertz V-Belt drive (V)	60 Hertz Coupled drive (C)
16 osi 27.68"wc	2316-24/2-T3	E	350	T3.0-C36T1L7.0C	6	6	2923-10-24A	8-24	2942-10-24A	205	510	435
	2316-24/2-T5	E	600	T5.0-C36T1L7.0C	6	6	2923-10-24A	8-24	2942-10-24A	220	530	470
	2316-28/1-T5	C	600	T5.0-D36T1SC	8	6	2923-14-28A	9-28	2942-14-28A	215	720	570
	2316-26/1-T5	C	620	T5.0-D36T1SC	6	6	2923-12-26A	8-26	2942-12-26A	220	530	530
	2316-31/2-T7.5	E	850	T7.5-D36T1L8.3C	8	8	2923-14-31A	9-31	2942-14-31A	320	790	590
	2316-28/1-T7.5	C	950	T7.5-D36T1SC	8	6	2923-14-28A	9-28	2942-14-28A	235	810	630
	2316-26/1-T7.5	C	1000	T7.5-D36T1SC	6	8	2923-14-26A	8-26	2942-14-26A	260	570	570
	2316-31/2-T10	E	1200	T10-D36T1L8.3C	8	8	2923-18-31A	9-31	2942-18-31A	340	810	610
	2316-35/1-T10	C	1300	T10-D36T1SC	8	8	2923-18-35B	9-35A	2942-18-35B	460	830	630
	2316-21/1-T15	B	1950	T15-D36T1SC	10	10	2923-22-21A	10-21	2942-22-21A	425	1150	885
	2316-35/1-T15	C	2000	T15-D36T1SC	8	10	2923-18-35B	9-35A	2942-18-35B	490	860	660
	2316-21/1-T20	B	2700	T20-D36T1SC	10	10	2923-22-21A	10-21	2942-22-21A	670	1050	820
	2316-33/1-T25	B	3300	T25-D36T1SC	12	12	2923-22.5-33A	12-33	2942-22.5-33A	1100	1900	1400
	2316-33/1-T30	B	4100	T30-D36T1SC	12	14	2923-30-33A	12-33	2942-30-33A	1200	2000	1500
	2316-37/1-T40	A	5300	T40-D36S1SC	16	18	2923-30-37A	16-37	2942-30-37A	1090	-	-
	2316-37/1-T50	A	6730	T50-D36S1SC	16	18	2921-1602-8/37	16-37	2941-1602-8/37	1100	-	-
	2316-37/1-T60	A	8650	T60-D36S1SC	18	24	2921-1802-8/37	16-37	2941-1802-8/37	1420	-	-
	2316-37/1-T75	A	11000	T75-D36S1SCB	18	24	2921-1802-8/37	18-37	2941-1802-8/37	1570	-	-
	2316-37/1-T100	A	14500	T100-D36S1SD	20	24	2921-2003-12/37	20-37	2941-2003-12/37	1730	-	-
	20 osi 34.60"wc	2320-19/2-T1.5	C	100	T1.5-C36T1L6.7C	3	3	2923-8-19A	None	2942-8-19A	160	370
2320-19/2-T2		C	170	T2.0-C36T1L6.7C	4	4	2923-8-19B	"	2942-8-19B	170	380	380
2320-19/2-T3		C	290	T3.0-C36T1L7.0C	4	4	2923-8-19B	"	2942-8-19B	190	400	400
2320-26/2-T5		C	500	T5.0-D36T1L7.0C	6	6	2923-10-26A	8-26	2942-10-26A	260	570	570
2320-26/2-T7.5		C	720	T7.5-D36T1L7.0C	6	6	2923-12-26A	8-26	2942-12-26A	300	610	610
2320-35/1-T10		C	1000	T10-D36T1SC	8	8	2923-14-35B	9-35A	2942-14-35B	470	840	640
2320-21/1-T15		B	1500	T15-D36T1SC	10	8	2923-18-21A	10-21	2942-18-21A	625	1150	885
2320-35/1-T15		C	1700	T15-D36T1SC	8	8	2923-18-35B	9-35A	2942-18-35B	550	920	720
2320-21/1-T20		B	2100	T20-D36T1SC	10	10	2923-22-21A	10-21	2942-22-21A	680	1050	830
2320-33/1-T25		B	2900	T25-D36T1SC	12	12	2923-22.5-33A	12-33	2942-22.5-33A	1100	1900	1400
2320-33/1-T30		B	3400	T30-D36T1SC	12	12	2923-22.5-33A	12-33	2942-22.5-33A	1200	2000	1500
2320-33/1-T40		D	4500	T40-D36T1SC	12	14	2923-30-33A	12-33	2942-30-33A	1250	2050	1550
2320-33/1-T50		D	5800	T50-D36T1SC	12	14	2921-1202-6/33	12-33	2941-1202-6/33	1800	2400	2300
2320-37/1-T60		A	7470	T60-D36S1SC	18	20	2921-1802-8/37	18-37	2941-1802-8/37	1410	-	-
2320-37/1-T75		A	8900	T75-D36S1SCB	18	20	2921-1802-8/37	18-37	2941-1802-8/37	1490	-	-
2320-37/1-T100		A	11830	T100-D36S1SD	18	22	2921-1802-8/37	18-37	2941-1802-8/37	1620	-	-
2320-37/1-T125		A	14800	T125-D36S1SDB	20	26	2921-2003-12/37	20-37	2941-2003-12/37	2360	-	-
2320-37/1-T150		A	17800	T150-D36S1SD	22	26	2921-2403-12/37	24-37	2941-2403-12/37	2500	-	-
2320-39/1-T200		A	25000	T200-D36S1SD	22	30				2810	-	-
2320-39/1-T250		A	30000	T250-D36S1SD	30	30		Consult Cleveland		3540	-	-
24 osi 41.52"wc	2324-14/3-T1.5	C	80	T1.5-C36T1L9.0C	3	3	2923-8-14A	None	2942-8-14A	160	310	290
	2324-14/3-T2	C	120	T2.0-C36T1L9.0C	3	3	2923-8-14A	"	2942-8-14A	170	320	300
	2324-19/2-T3	C	210	T3.0-C36T1L7.0C	4	4	2923-8-19B	"	2942-8-19B	100	400	400
	2324-26/2-T5	C	370	T5.0-D36T1L7.0C	6	6	2923-10-26A	8-26	2942-10-26A	260	570	570
	2324-26/2-T7.5	C	600	T7.5-D36T1L7.0C	6	6	2923-12-26A	8-26	2942-12-26A	300	610	610
	2324-35/2-T10	C	810	T10-D36T1L8.3C	8	8	2923-14-35A	9-35	2942-14-35A	520	890	690
	2324-35/2-T15	C	1400	T15-D36T1L8.3C	8	8	2923-18-35A	9-35	2942-18-35A	550	920	720
	2324-21/1-T20	B	1800	T20-D36T1SC	10	10	2923-18-21A	10-21	2942-18-21A	680	1050	830
	2324-33/1-T25	B	2400	T25-D36T1SC	12	12	2923-22-33A	12-33	2942-22-33A	1100	1900	1400
	2324-33/1-T30	B	2800	T30-D36T1SC	12	12	2923-22-33A	12-33	2942-22-33A	1200	2000	1500
	2324-33/1-T40	D	3700	T40-D36T1SC	12	12	2923-30-33A	12-33	2942-30-33A	1250	2050	1550
	2324-33/1-T50	D	5200	T50-D36T1SC	14	14	2921-1402-6/33	14-33	2941-1202-6/33	1350	2150	1650
	2324-33/1-T60	D	6200	T60-D36T1SC	14	14	2921-1402-8/33	14-33	2941-1402-8/33	1400	2200	1700
	2324-37/1-T75	A	7300	T75-D36S1SCB	16	20	2921-1602-8/37	16-37	2941-1602-8/37	1490	-	-
2324-37/1-T100	A	10000	T100-D36S1SD	18	24	2921-1802-8/37	18-37	2941-1802-8/37	1690	-	-	
2324-37/1-T125	A	12400	T125-D36S1SDB	18	24	2921-1802-8/37	18-37	2941-1802-8/37	2230	-	-	
2324-37/1-T150	A	14800	T150-D36S1SD	22	24	2921-2403-12/37	24-37	2941-2403-12/37	2370	-	-	
32 osi 55.36"wc	2332-19/3-T3	C	90	T3.0-C36T1L10.6C	4	4	2923-8-19B	None	2942-8-19B	190	400	400
	2332-19/3-T5	C	260	T5.0-D36T1L10.6C	4	4	2923-8-19B	"	2942-8-19B	210	420	420
	2332-28/2-T7.5	C	330	T7.5-D36T1L8.3C	8	6	2923-14-28A	9-28	2942-14-28A	380	650	700
	2332-28/2-T10	C	600	T10-D36T1L8.3C	8	6	2923-14-28A	9-28	2942-14-28A	400	670	720

Nominal pressure osi/wc	Blower designation	Discharge Position Group	cfm at 100% of motor rating	3600 rpm TEFC 1.15 SF motor	Inlet nominal pipe size	Outlet nominal pipe size	Intake Filter designation	Intake Silencer 2936-	Intake Filter Silencer designation	Approx. weight, lb		
										60 Hertz Direct drive (D)	50 & 60 Hertz V-Belt drive (V)	60 Hertz Coupled drive (C)
32 osi 55.36"wc	2332-28/2-T15	C	900	T15-D36T1L8.3C	8	6	2923-14-28A	9-28	2942-14-28A	430	700	750
	2332-21/2-T20	B	1100	T20-D36T1L10.0C	10	8	2923-18-21A	10-21	2942-18-21A	680	1050	830
	2332-21/2-T25	B	1500	T25-D36T1L10.7C	10	8	2923-18-21A	10-21	2942-18-21A	710	1100	860
	2332-21/2-T30	D	1800	T30-D36T1L10.7C	10	8	2923-18-21A	10-21	2942-18-21A	780	1150	930
	2332-21/2-T40	D	2400	T40-D36S1L10.7C	10	8	2923-22-21A	10-21	2942-22-21A	810	1200	960
	2332-33/2-T50	D	3200	T50-D36T1L12.0C	12	12	2923-22.5-33A	12-33	2942-22.5-33A	1450	2250	1750
	2332-33/2-T60	D	3900	T60-D36T1L12.0D	12	12	2923-30-33A	12-33	2942-30-33A	1500	2300	1800
	2332-37/1-T75	A	6050	T75-D36S1SCB	16	20	2921-1602-8/37	16-37	2941-1602-8/37	1700	-	-
	2332-37/1-T100	A	8070	T100-D36S1SD	16	24	2921-1602-8/37	16-37	2941-1602-8/37	1850	-	-
	2332-37/1-T125	A	9900	T125-D36S1SDB	16	24	2921-1602-8/37	16-37	2941-1602-8/37	2400	-	-
2332-37/1-T150	A	11280	T150-D36S1SD	18	24	2921-1802-8/37	18-37	2941-1802-8/37	2520	-	-	
44 osi 76.12"wc	2344-28/3-T15	C	640	T15-D36T1L13.5C	8	6	2923-14-28A	9-28	2942-14-28A	510	780	830
	2344-28/3-T20	C	900	T20-D36T1L13.5C	8	6	2923-14-28A	9-28	2942-14-28A	580	850	900
	2344-21/2-T30	D	1400	T30-D36T1L10.7C	10	8	2923-18-21A	10-21	2942-18-21A	780	1150	930
	2344-21/2-T40	D	1900	T40-D36S1L10.7C	10	8	2923-18-21A	10-21	2942-18-21A	810	1200	960
	2344-21/2-T50	D	2500	T50-D36S1L10.7C	10	8	2923-22-21A	10-21	2942-22-21A	900	1300	1050
1800 rpm												
8 osi 13.84"wc	2308-44/1-T10	D	2700	T10-C18T1SC	16	16	2923-30-44A	16-44	2942-30-44A	1400	2100	2000
	2308-44/1-T15	D	4100	T15-C18T1SC	16	16	2923-30-44A	16-44	2942-30-44A	1450	2150	2050
	2308-44/1-T20	D	5500	T20-C18T1SC	16	18	2921-1602-6/44	16-44	2941-1602-6/44	1500	2200	2100
	2308-44/1-T25	D	6500	T25-C18T1SC	16	18	2921-1602-8/44	16-44	2941-1602-8/44	1650	2300	2200
	2308-44/1-T30	D	7200	T30-C18T1SC	16	18	2921-1602-8/44	16-44	2941-1602-8/44	1650	2350	2250
	2308-47/1-T40	D	10000	T40-C18T1SC	24	24	2921-2403-12/47	24-47	2941-2403-12/47	1800	2100	2100
2308-47/1-T50	D	12500	T50-D18T1SC	24	24	2921-2403-12/47	24-47	2941-2403-12/47	1850	2200	2200	
10 osi 17.30"wc	2310-47/1-T40	D	8000	T40-D18T1SC	24	20	2923-2403-12/47	24-47	2941-2403-12/47	1800	2100	2100
	2310-47/1-T50	D	10500	T50-C18T1SC	24	24	2923-2403-12/47	24-47	2941-2403-12/47	1850	2200	2200
12 osi 20.76"wc	2312-41/1-T20	D	4000	T20-C18T1SC	16	16	2923-30-41A	16-41	2942-30-41A	1500	2200	2100
	2312-41/1-T25	D	4900	T25-C18T1SC	16	16	2923-30-41A	16-41	2942-30-41A	1600	2300	2200
	2312-41/1-T30	D	5500	T30-C18T1SC	16	16	2921-1602-6/41	16-41	2941-1602-6/41	1650	2350	2250
	2312-47/1-T40	D	7100	T40-C18T1SC	24	18	2921-2403-12/47	24-47	2941-2403-12/47	1900	2200	2200
	2312-41/1-T40	D	7300	T40-C18T1SC	16	18	2921-1602-8/41	16-41	2941-1602-8/41	1750	2450	2350
	2312-47/1-T50	D	10000	T50-C18T1SC	20	20	2921-2403-12/47	24-47	2941-2403-12/47	1950	2300	2300
16 osi 27.68"wc	2316-41/1-T20	D	3000	T20-D18T1SC	16	12	2923-30-41A	16-41	2942-30-41A	1500	2200	2100
	2316-41/1-T25	D	3700	T25-D18T1SC	16	12	2923-30-41A	16-41	2942-30-41A	1600	2200	2100
	2316-41/1-T30	D	4500	T30-D18T1SC	16	16	2923-30-41A	16-41	2942-30-41A	1650	2250	2150
	2316-41/1-T40	D	5500	T40-D18T1SC	16	16	2921-1602-6/41	16-41	2941-1602-6/41	1750	2350	2250
	2316-41/1-T50	D	7000	T50-D18T1SC	16	16	2921-1602-8/41	16-41	2941-1602-8/41	1800	2400	2300
	2316-47/1-T75V	D	11500	T75-C18T1SD	20	24	2921-2403-12/47	24-47	2941-2403-12/47	-	2400	-
20 osi 34.6"wc	2320-41/1-T25	D	2600	T25-D18T1SC	16	12	2923-30-41A	16-41	2942-30-41A	1600	2200	2100
	2320-41/1-T30	D	3300	T30-D18T1SC	16	12	2923-30-41A	16-41	2942-30-41A	1650	2250	2150
	2320-41/1-T40	D	4500	T40-C18T1SC	16	16	2923-30-41A	16-41	2942-30-41A	1750	2350	2250
	2320-41/1-T50	D	5800	T50-C18T1SC	16	16	2921-1602-6/41	16-41	2941-1602-6/41	1800	2400	2300
	2320-41/1-T60	D	7300	T60-D18T1SD	16	16	2921-1602-8/41	16-41	2941-1602-8/41	1900	2500	2400
24 osi 41.52"wc	2324-41/1-T30V	D	2300	T30-C18T1SC	16	12	2923-30-41A	16-41	2942-30-41A	-	2250	-
	2324-41/1-T40V	D	3500	T40-C18T1SC	16	12	2923-30-41A	16-41	2942-30-41A	-	2350	-
	2324-41/1-T50V	D	4700	T40-C18T1SC	16	16	2923-30-41A	16-41	2942-30-41A	-	2400	-
	2324-41/1-T60V	D	6200	T60-C18T1SD	16	16	2921-1602-8/41	16-41	2941-1602-8/41	-	2500	-
2324-41/1-T75V	D	7900	T75-C18T1SD	16	16	2921-1602-8/41	16-41	2941-1602-8/41	-	2550	-	
32 osi 55.36"wc	2332-41/2-T75C	D	4500	T75-C18T1SD	16	12	2923-30-41A	16-41	2942-30-41A	-	-	2850
	2332-41/2-T100C	D	6200	T100-C18T1SD	16	16	2921-1602-8/41	16-41	2941-1602-8/41	-	-	2900
	2332-41/2-T125C	D	7100	T125-C18T1SD	16	16	2921-1602-8/41	16-41	2941-1602-8/41	-	-	3100
38 osi 65.74"wc	2338-41/2-T75C	D	3800	T75-C18T1SD	16	12	2923-30-41A	16-41	2942-30-41A	-	-	2850
	2338-41/2-T100C	D	5600	T100-C18T1SD	16	12	2921-1602-6/41	16-41	2941-1602-6/41	-	-	2900

WARNING: Situations dangerous to personnel and property may exist with the operation and maintenance of any combustion equipment. The presence of fuels, oxidants, hot and cold combustion products, hot surfaces, electrical power in control and ignition circuits, etc., are inherent with any combustion application. Parts of this product may exceed 160F in operation and present a contact hazard. Fives North American Combustion, Inc. urges compliance with National Safety Standards and insurance Underwriters recommendations, and care in operation.